



NEW PRODUCTS 2023

węże i złącza przemysłowe

 **INTERTECH**24.pl

available
now



Watering set, hedges and flower beds

Practical basic set incl. all necessary connector parts:
1 x device connector, 1 x pressure reducer (to 1.4 bar), 1 x adapter 16 mm, 50 m drip tube 16 mm, 20 x pipe support, 3 x T-piece, 2 x L-piece, 5 x straight connector, 5 x cap

Area of application:for water-saving **irrigation of hedges, edgings and flower beds**

Installation:can be installed above ground

Special note:drip tube: **self-cleaning** thanks to labyrinth technology, **pressure compensation** with silicone membrane can be extended with accessories 16 mm

Packaging	4-colour package label
Pipe length m	50
Diameter/Size mm	16
Water discharge per drip head l/h	2.1
Drip head spacing cm	30
Installation length in a row max. m	80
Installation length with pressure reducer in the middle max. m	150
Length per branch max. m	50
PU units	1
Article No.	17.0120.9



Here you can view
a tutorial of the set



GEKA® drip system

available
now

Watering set, vegetables and flower beds

Practical basic set incl. all necessary connector parts:

1 x device connector, 1 x pressure reducer (to 1.4 bar), 1 x adapter 6 mm, 15 m supply pipe 6 mm, 15 m drip tube 6 mm, 16 x pipe support, 8 x T-piece, 2 x L-piece, 5 x straight connector, 2 x shutoff valve, 10 x cap

Area of application:for water-saving **irrigation of small flower beds with sensitive crop and ornamental plants, raised flower beds or balcony boxes**

Installation:.....can be installed above ground

Special note:.....drip tube: **self-cleaning** thanks to labyrinth technology; **very flexible** thanks to small pipe diameter, can be extended with accessories 6 mm

Packaging	4-colour box with Euro hole
Pipe length m	2 x 15
Diameter/Size mm	6
Water discharge per drip head l/h	1.5
Drip head spacing cm	15
Installation length in a row max. m	15
Installation length with pressure reducer in the middle max. m	30
Length per branch max. m	10
PU units	3
Article No.	17.0111.8



Here you can view a tutorial of the set



Watering set, balcony and terrace

Practical basic set incl. all necessary connector parts:

1 x device connector, 1 x pressure reducer (to 1.4 bar), 1 x adapter 6 mm, 15 m supply pipe 6 mm, 10 x inline drip head 0-6 l/h, 2 x T-piece, 5 x straight connector, 2 x shutoff valve, 5 x cap

Area of application:for water-saving **irrigation of pot plants on balconies and terraces and balcony boxes for up to 10 plants**

Installation:.....can be installed above ground

Special note:.....**adjustable water discharge** for plants with different water requirement

Packaging	4-colour box with Euro hole
Pipe length m	15
Diameter/Size mm	6
Water discharge per drip head l/h	adjustable from 0-6
Installation length in a row max.	15 inline drip heads
Installation length with pressure reducer in the middle max.	40-50 inline drip heads
Length per branch max.	15 inline drip heads
PU units	3
Article No.	17.0110.8



Here you can view a tutorial of the set



Order: By fax: +49 7191 34 52 - 100 By e-mail: info@geka.de

3



GEKA® drip tubes

available
now



Supply pipe 16 mm

Area of application: central supply line in the GEKA drip system.
Transports the water to watering point

Installation: can be installed above and below ground

Special note: UV-resistant, lightproof

Packaging	4-colour package label
Content	1
Pipe length m	25
Diameter/Size mm	16
PU units	1
Article No.	17.0121.9



Supply pipe 6 mm

Area of application: central supply line in the GEKA drip system.
Transports the water to watering point

Installation: can be installed above and below ground

Special note: UV-resistant, lightproof, very flexible thanks to small pipe diameter

Packaging	4-colour package label with Euro hole
Content	1
Pipe length m	15
Diameter/Size mm	6
PU units	3
Article No.	17.0112.8



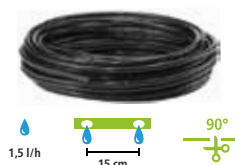
Drip tube 16 mm

Area of application: for water-saving irrigation of hedges, edgings and flower beds

Installation: can be installed above ground

Special note: **self-cleaning** thanks to labyrinth technology, **pressure compensation** with silicone membrane

Packaging	4-colour package label
Content	1
Pipe length m	50
Diameter/Size mm	16
Water discharge per drip head l/h	2.1
Drip head spacing cm	30
Installation length in a row max. m	80
Installation length with pressure reducer in the middle max. m	150
Length per branch max. m	50
PU units	1
Article No.	17.0122.9



Drip tube 6 mm

Area of application: for water-saving irrigation of small flower beds with sensitive crop and ornamental plants, raised flower beds or balcony boxes

Installation: can be installed above ground

Special note: **self-cleaning** thanks to labyrinth technology, **very flexible** due to small pipe diameter thanks to silicone membrane

Packaging	4-colour package label with Euro hole
Content	1
Pipe length m	15
Diameter/Size mm	6
Water discharge per drip head l/h	1.5
Drip head spacing cm	15
Installation length in a row max. m	15
Installation length with pressure reducer in the middle max. m	30
Length per branch max. m	10
PU units	3
Article No.	17.0113.8



GEKA® drip tube support and inline drippers

available
now

Pipe support 16 mm

Area of application:.....for fixing drip tube 16 mm (Article No. 17.0122.9)
and supply pipe 16 mm (Article No. 17.0121.9)
in the soil

Special note:.....Barbs at ground spike provide additional support

Packaging	Card
Content	10 pc.
for pipe diameter mm	16
PU units	5
Article No.	17.0123.8



Pipe support 6 mm

Area of application:.....for fixing drip tube 6 mm (Article No. 17.0113.8)
and supply pipe 6 mm (Article No. 17.0112.8)
in the soil

Special note:.....Barbs at ground spike provide additional support

Packaging	Card
Content	10 pc.
for pipe diameter mm	6
PU units	6
Article No.	17.0114.8



Inline dripper 6 mm

Area of application:.....for water-saving irrigation of pot plants
on balconies and terraces and balcony boxes

Special note:.....**adjustable water discharge** for plants
with different water requirement
combined with ground spike

Packaging	Card
Content	6 pc.
Can be used with	supply pipe 6 mm (Article No. 17.0112.8)
Adjustable water l/h	discharge from 0-6
PU units	5
Article No.	17.0115.8



Here you can view tutorials
of our drip irrigation sets

Order: By fax: +49 7191 34 52 - 100 By e-mail: info@geka.de

5



Pressure reducer set 16 mm

Area of application: **starting device for the GEKA drip system**
 reduces the water pressure
 connects hose system and GEKA® drip watering system

Pressure reduction : to 1.4 bar

Special note: **high-quality connector made of metal**



→ 1,4 bar

Packaging	Card
Content	1 x device connector, 1 x pressure reducer, 1 x adapter piece for 16 mm pipe
Can be used with	drip tube 16 mm (Article No. 17.0122.9) and supply pipe 16 mm (Article No. 17.0121.9)
Water flow up to l/h	1800
PU units	5
Article No.	17.0125.8

Pressure reducer set 6 mm

Area of application: **starting device for the GEKA drip system**
 reduces the water pressure
 connects hose system and GEKA® drip watering system

Pressure reduction : to 1.4 bar

Special note: **high-quality connector made of metal**



→ 1,4 bar

Packaging	Card
Content	1 x device connector, 1 x pressure reducer, 1 x adapter piece for 6 mm pipe
Can be used with	drip tube 6 mm (Article No. 17.0113.8) and supply pipe 6 mm (Article No. 17.0112.8)
Water flow up to l/h	1800
PU units	5
Article No.	17.0117.8

Pipe connector set 16 mm

Area of application: for the individual design of the installation:
 extending pipes, change of direction, branching,
 sealing pipe ends



2 x

2 x

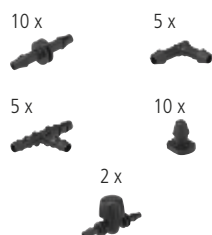
3 x

5 x

Packaging	Card
Content	12 pipe connectors: 2 x straight connector, 2 x L-piece, 3 x T-piece, 5 x cap
Can be used with	drip tube 16 mm (Article No. 17.0122.9) and supply pipe 16 mm (Article No. 17.0121.9)
PU units	5
Article No.	17.0124.8

Pipe connector set 6 mm

Area of application: for the individual design of the installation:
 extending pipes, change of direction, branching,
 sealing pipe ends and shutting off individual strands



10 x

5 x

5 x

10 x

2 x

Packaging	Card
Content	32 pipe connectors: 10 x straight connector, 5 x L-piece, 5 x T-piece, 10 x cap, 2 x shutoff valve
Can be used with	drip tube 6 mm (Article No. 17.0113.8) and supply pipe 6 mm (Article No. 17.0112.8)
PU units	6
Article No.	17.0116.8

GEKA® plus water hoses



available
now

GEKA® plus water hoses WS500

- Advantage / benefit:.....4-layer hose design, top quality materials
PVC-free inner layer for safe use in crop plants area and avoiding biofilm
very robust and long-lasting
 extremely pressure-resistant and dimensionally stable thanks to **Anti-Twist Technology (ATT)**
 no twisting and warping, no kinking thanks to robust, thick-walled outer layer
 maximum flexibility and temperature resistance
 algae-free, weathering- and UV-resistant
 phthalate-, PAH-free
 REACH- and RoHS-compliant
 Made in Germany
 25-year warranty*
- Material:.....core: high-quality, light blue PVC-free inner layer (plastic)
 intermediate layer: anti-algae protective and support layer, black , PVC
 middle layer: ATT (Anti-Twist Technology) fabric insert
 outer layer: high-quality, thick-walled PVC
- Temperature range:- 20 °C to + 60 °C
- Colour:yellow with matt surface, grey line and 3 grey stripes
- Area of application:intensive use, heavy-duty use, garden centres, landscape
 contracting companies, organic vegetable growing,
 municipalities and discerning garden owners, etc.
- Packaging:.....with box-display disc and EAN code



Hose size inches	3/4"	3/4"	1"	1"
Hose ID mm	19	19	25	25
Hose outer diameter mm	24,8	24,8	33	33
Wall thickness mm	3,1	3,1	4	4
Approx. length m	25	50	25	50
Operating pressure at +20 °C bar	11	11	10	10
Bursting pressure	35	35	30	30
PU units	1	1	1	1
Article No.	13.0220.9	13.0221.9	13.0222.9	13.0223.9

* more information on warranty conditions:
<http://www.geka.de/garantie>



GEKA® plus water hoses WS400

- Advantage / benefit:.....5-layer hose design, top quality materials
Additional coating to protect against damage and excellent gliding properties robust and long-lasting
 very pressure-resistant and dimensionally stable
 no twisting and warping, no kinking thanks to **Anti-Twist Technology (ATT)**
 very high flexibility and temperature resistance
 algae-free, weather- and UV-resistant
 phthalate-, PAH-free
 REACh- and RoHS-compliant
 20-year warranty*
- Material:.....core: high-quality grey PVC,
 1st intermediate layer: anti-algae protective layer, black, PVC
 2nd intermediate layer: support layer, grey, PVC
 middle layer: ATT (Anti-Torsion Technology) double fabric insert
 outer layer: high-quality, transparent PVC
- Temperature range:approx. -20 °C to +60 °C
- Colour:transparent grey with matt surface, with anthracite line and 2 green stripes
- Area of application:intensive use, heavy-duty use, garden centres, landscape contracting companies, discerning garden owners, etc.
- Packaging:.....with box-display disc and EAN code



Hose size inches	1/2"	1/2"	5/8"	5/8"
Hose ID mm	13	13	15	15
Hose outer diameter mm	17	17	20	20
Wall thickness mm	2,4	2,4	2,6	2,6
Approx. length m	25	50	25	50
Operating pressure at +20 °C bar	16	16	13	13
Bursting pressure	50	50	39	39
PU units	1	1	1	1
Article No.	13.0210.9	13.0211.9	13.0212.9	13.0213.9

Hose size inches	3/4"	3/4"	1"	1"
Hose ID mm	19	19	25	25
Hose outer diameter mm				
Wall thickness mm				
Approx. length m	25	50	25	50
Operating pressure at +20 °C bar	11	11	9	9
Bursting pressure	33	33	27	27
PU units	1	1	1	1
Article No.	13.0214.9	13.0215.9	13.0216.9	13.0217.9

* more information on warranty conditions:
<http://www.geka.de/garantie>

GEKA® plus water hoses

available
February

GEKA® plus water hoses WS300

Advantage / benefit:.....4-layer hose design, high-quality materials
pressure-resistant and dimensionally stable
 medium pressure, kink and torsional stability
 flexible and temperature-resistant
 algae-free, weather- and UV-resistant
 phthalate-, PAH-free
 REACH- and RoHS-compliant
 15-year warranty*

Material:.....core: high-quality black PVC
 intermediate layer: anti-algae protective and support layer, green, PVC
 middle layer: canvas made of highly tear-resistant polyester yarn
 outer layer: high-quality, transparent PVC

Temperature range:.....approx. -15 °C to +50 °C

Colour:.....transparent green with dark grey, matt stripe

Area of application:.....frequent use, medium stress, discerning garden owners, etc.

Packaging:.....with box-display disc and EAN code



Hose size inches	1/2"	1/2"	3/4"	3/4"
Hose ID mm	13	13	19	19
Hose outer diameter mm	16,3	16,3	23,6	23,6
Wall thickness mm	2	2	2,5	2,5
Approx. length m	25	50	25	50
Operating pressure at +20 °C bar	12	12	10	10
Bursting pressure	36	36	30	30
PU units	1	1	1	1
Article No.	13.0200.9	13.0201.9	13.0202.9	13.0203.9

* more information on warranty conditions:
<http://www.geka.de/garantie>

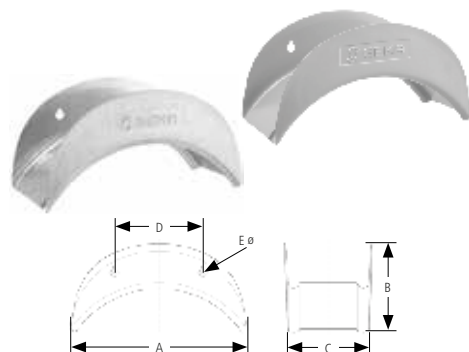
Wall-mounted hose supports

available
April

Advantage / benefit:extremely stable, solid design and workmanship
 Area of application:for industry, workshop, filling stations, etc.

Wall-mounted hose supports for workshop, sheet steel

Material	sheet steel,	sheet steel,
	galvanised	silver, powder-coated
Capacity** of 1/2" hose approx. m	70	70
Capacity** of 5/8" hose approx. m	60	60
Capacity** of 3/4" hose approx. m	37	37
Capacity** of 1" hose approx. m	25	25
A mm	280	280
B mm	140	140
C mm	130	130
D mm	140	140
E mm	Ø 11.7	Ø 11.7
PU units	1	1
Covering box units	20	20
Article No.	42.5111.9	42.5112.9



** The information on the capacity are guide values and were taken at a mounting height of approx. 1.5 m, a loop diameter of approx. 1.0 m and measured with our WS400 water hoses neatly rolled up to the upper edge of the hose holder.

Order: By fax: +49 7191 34 52 - 100 By e-mail: info@geka.de



GEKA® hose boxes

available
now

GEKA® automatic wall-mounted hose box K15

Advantage / benefit: **automatic roll-up and comfortable unwinding** of hose without knotting; hose can be locked in any position;
controlled and safe hose intake (slow retract);
tool-free adjustable hose stopper;
robust wall mount: 180° rotatable;
 incl. mounting kit (4x dowels, 4x screws and 4x stainless steel washers);
with anti-drip feature for supply hose thanks to practical plug-in option;
easy to detach from the wall;
fully assembled and ready to use;
compact size;
including high-quality, robust push-fit system and spray nozzle;
made from chrome-plated brass;

Operating pressure at +20 °C:..... 10 bar
 Temperature range:..... +4 °C to +45 °C
 Dimensions LxWxH cm:..... 50 (incl. mount) x 18 x 40
 Scope of delivery: GEKA® plus spray nozzle, light; GEKA® plus hose piece 1/2";
 GEKA® plus hose piece 1/2" with water stop; GEKA® plus tap plug G3/4,
 15 m hose + 2 m supply hose

Hose size	1/2"
Hose ID mm	12.5
Hose length approx. m	15
Approx. length supply hose m	2
Packaging	Box
PU units	1
Article No.	42.8710.9



Automatic roll-up	Infinitely variable locking mechanism	Incl. assembly kit and metal mount	Supply hose 2 m	can be adjusted without tools
Incl. push-fit system made of metal	Safe, controlled retraction	Plug-in option for supply hose	180° rotatable	



GEKA® plus push-fit system drinking water

available
now

GEKA® plus drinking water set, caravan

Advantage / benefit:.....**suitable for drinking water as all components are DVGW-certified perfectly hygienic filling** of drinking water tank from the dispenser to the filling spout
the set is preassembled and comes in a practical storage bag

Area of application:.....**ideal companion for the caravan, e.g., for filling the drinking water tank**

Material:.....GEKA® plus push-fit system drinking water components: brass, DIN 17660 and 50930/6; hose: PE

Scope of delivery:.....5 m or 10 m drinking water hose Rauaqua 1/2"; 2 x GEKA® plus hose piece 1/2"; 2 x GEKA® plus sealing plug; 1 x GEKA® plus tap plug 3/4"; 1 x storage bag with zip

Options:.....can be expanded with GEKA® plus push-fit system drinking water components



Packaging	in a bag	in a bag
Hose ID mm	13	13
Hose size	1/2"	1/2"
Hose length m	5	10
PU units	1	1
Article No.	46.1831.9	46.1833.9

Boiler filling set

available
now

Boiler filling set

Area of application:.....**for refilling and emptying the water in boilers**

Scope of delivery:.....5 m GEKA® flex water hose, 1/2" (13 mm) with fabric insert
2 x GEKA® 2/3-threaded hose fitting
2 x Two-ear-clamp
1 x GEKA® plus wall-mounted hose support P, light metal powder-coated

Packaging	Box
Hose ID mm	13
Hose size	1/2"
Hose length approx. m	5
PU unit	1
Article No.	13.8214.9

*only while stocks last



Limited
Edition*

Spare parts for valves with lever

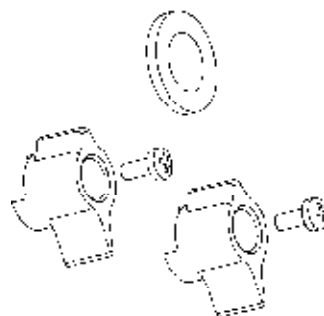
available
now

Spare part set lever and flat seal

For Article No. 33.5331, 46.0431, 46.0432, 46.0433,
46.0434, 46.0435, 33.5331



Article No.	Designation
46.0440.8	Spare parts set lever and flat seal




Order: By fax: +49 7191 34 52 - 100 By e-mail: info@geka.de

11






KARASTO Armaturenfabrik Oehler GmbH
Manfred-von-Ardenne-Allee 27
71522 Backnang | Germany

 +49 7191 34 52 - 0

 +49 7191 34 52 - 100

 info@geka.de

 www.geka.de

The GEKA® brand is a registered trademark of KARASTO Armaturenfabrik Oehler GmbH, Germany.

© 01/2023 GEKA® Product No. 99.1199